

Project and Idea Book

Inspiration for Creating Customized
Crafts, Gifts, and Home Décor





Add Your Own Accent to Your Lifestyle with Creative Fun!

Give life to your ideas and creativity as you make your own crafts using fabric, paper, and more! Enjoy the added excitement of working step by step to finish each item. Give your pieces as delightful presents, or keep and enjoy them for yourself!

This guide is a collection of fun crafts that you can start creating right away. You can follow the projects exactly, or use the instructions as suggestions for making a wide variety of unique items of your very own. The choice is yours – with ScanNCut you can now design projects exactly as you've always dreamed you could.

CONTENTS

PROJECT 01	Table Setting Name Cards	03
PROJECT 02	Greeting Cards	05
PROJECT 03	Banner	07
PROJECT 04	Ornamental Card	09
PROJECT 05	Photo Album Cover	11
PROJECT 06	Pop-up Card	13
PROJECT 07	Fancy Boxes	15
PROJECT 08	Beverage Tumbler	17
PROJECT 09	Photo Stand	19
PROJECT 10	Pop-up Card and Letter Set	21
PROJECT 11	Calendar	23
PROJECT 12	Keepsake Box	25
PROJECT 13	Lampshade	27
PROJECT 14	Appliqué Tote Bag	29
PROJECT 15	Framed Patchwork Square	31
	Ornaments	33
OVERVIEW OF FUNCTIONS	Built-in Patterns	35
	Direct Cut	
	Scan to Cut Data	
	Scan to USB	
	Background Scan	
	Editing Functions	
Optional Accessories	Quilt Pattern Collection	
	Appliqué Pattern Collection	
	Additional Accessories	

Papers provided by:
Kuretake Co., Ltd. <http://www.zig-kuretake.com>
Kaisercraft <http://www.kaisercraft.com.au>

Name cards that convey your heartfelt thanks

These name cards are for indicating guest place settings at banquets, parties, and other special events. The lovely heart design adorned with beads and lamé makes for eye-catching table settings. Add your own personal touch to create a special thank-you to your guests for attending.



Material

Outer dimensions: 3.5" x 3.74" (when folded closed)
 Paper – 3 kinds
 Large heart (white): 3.74" x 3.74"
 Square (white): 1.78" x 3.74"
 Small heart (pink): 3.15" x 3.15"
 Paper printed with name
 Rhinestones, curly ribbon, glue
 Decorate as desired.



Tip When gluing the piece of paper printed with the guest's name, applying the glue at an unobtrusive location helps ensure attractive results. These name cards mark the table place settings for important guests, and careful attention to detail as you craft the cards will help convey your esteem and high regard.

- 1 Weld the built-in patterns for the two hearts and the rectangle, then cut the piece.

Built-in Patterns: BA-A023
 BA-A067 x 2
 Function: Editing Functions (Welding)

- 2 Cut the built-in patterns for the heart and rectangle.

Built-in Patterns: BA-A023
 BA-A067 x 2

- 3 Scan the preprinted guest name. Select the built-in pattern, use Background Scan to scan it, position the guest name against the background, then cut the piece.

Built-in Pattern: BA-A023
 Function: Background Scan

- 4 Stack and glue the cut pieces in place, then glue rhinestones to the pieces.

- 5 Fold and assemble, and glue at the top of the heart.

- 6 Decorate with ribbon as shown in the photo.



Make someone's day with this stylish greeting card

Use this greeting card to convey your congratulations on a special occasion. The fun array of design elements is the perfect way to express your feelings. Personalize the design with your own special touches!



Material

Outer dimensions (opened card): 9.94" x 7.01"
 Paper – 9 kinds
 Party cracker: 5.90" x 5.09"
 Large balloon: 2.60" x 1.55",
 Small balloons (2): 1.98" x 1.18"
 Glitter pen, beads, curly ribbon, glue
 Cut vellum backing to appropriate size.



Tip These balloon pieces and many other built-in patterns have inner cut-out areas. The color and texture of paper glued to the back of pieces that have such cut-out areas can have a big effect on the final look and feel. Experiment with your favorite materials to create beautiful textures on your projects.

- 1 To make the base card, select and cut a rectangle built-in pattern, then fold at the center.

Built-in Pattern: BA-A012

- 2 Cut the built-in patterns for the balloons and the party cracker. Make three balloons of different sizes.

Built-in Patterns: AR-I032 x 3
 AR-I034 (pieces A, B, D, E)

- 3 Glue vellum to the backs of the balloon pieces to create glossy highlights.

- 4 Attach the cut pieces to the base card prepared in step 1. Decorate it with spangles and glitter.

- 5 Give the ribbon a curl by gently pulling it between the ball of your thumb and a scissors blade, then attach the ribbon.

- 6 Use a glitter pen to draw lines in the inner message area and embellish the results.



A birthday banner that's sure to bring a smile

Children's birthdays are special occasions, and this cheery hand-crafted banner is sure to make any child's birthday even more memorable. Use the child's favorite colors and design elements to create a charming design just for your child!



Material

Size of base paper when strung and folded over:
6.3" x 4.92"

Paper – 21 kinds

Trapezoid: 1.78" x 4.92"

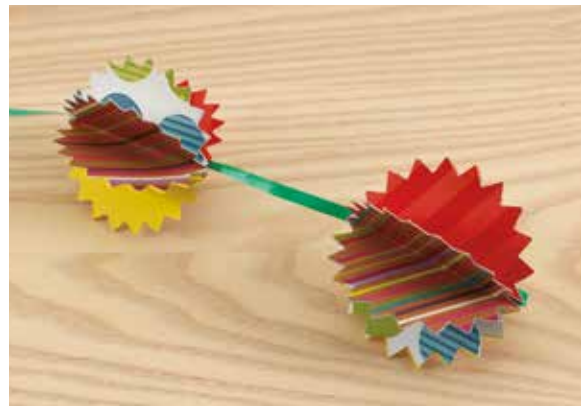
Typical shape (BA-A123): 6.3" x 4.92"

Size of parts on base paper: 5.91" x 4.51"

Letters: 2.75" high; width varies according to letter

String, glue

Make the size of all parts mounted on base paper
5.91" x 5.53".



Tip Create 3D décor by combining 6 pieces of the same shape folded together to create these custom spheres.

- 1 Select and cut the 4 built-in patterns for the banner shapes.

Built-in Patterns: BA-A038 x 3
BA-A041 x 3
BA-A114 x 3
BA-A123 x 4

- 2 Choose a trapezoid-shaped built-in pattern and weld it to the top of each of the other built-in patterns. Make pieces that are slightly larger than the pieces from step 1. The difference in size will make passing string possible.

Built-in Patterns: BA-A029 x 13, BA-A038 x 3, BA-A041 x 3
BA-A114 x 3, BA-A123 x 4
Function: Editing Functions (Welding)

- 3 Attach the pieces from step 1 to the base pieces from step 2.

- 4 Select a built-in font to lay out and cut the letters.

Built-in Pattern: FO-A002

- 5 Glue together the pieces from steps 1, 2, and 4.

- 6 Fold the top parts over the string and glue in place. To allow the parts to slide, apply the glue at an area away from the string.



An ornamental card that brings your ideas to life

You can use this ornamental card as a photo frame to liven up any room, or as a gift card to make a special present even more meaningful. Just thinking about who to give the card to as you craft it is sure to bring to mind countless ways to decorate it.



Material

Outer dimensions (when finished): 5.94" x 11.18"
 Paper – 13 kinds
 Triangle and square welded first: 2.80" x 5.94"
 Overlaid wavy square and square: 2.16" x 2.16"
 Photo frame: 1.77" x 1.77"
 Bands (flower – blue): 1.18" x 11.18"
 Walls (green): 2.80" x 4.76"
 Windows: 1.18" x 1.80"
 Pompoms, tags, photo, glue, rhinestone
 Decorate as desired.



Tip The Auto Layout function can help save paper by automatically calculating the most efficient layout to use when you cut multiple pieces.

Built-in Pattern: BA-A033 x 4
 Function: Editing Functions (Auto Layout Functions)

- 1 Make the house-shaped base. Select built-in patterns for the triangle and rectangle and weld them together. Copy the produced shape 3 times, then lay out and weld the 3 pieces.

Built-in Patterns: BA-A022 x 4
 BA-A033 x 4
 Function: Editing Functions (Welding)

- 2 Cut 2 copies of the house-shaped base made in step 1 to make the front and back pieces. Fold the front and back pieces to give them creases.

- 3 Choose the built-in patterns for the remaining pieces, and cut the pieces. Use the built-in fonts and welding to cut the letters.

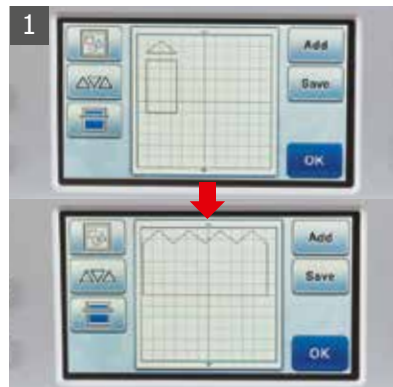
Built-in Patterns: BA-A001 x 2, BA-A008
 BA-A012 x 4, BA-A033 x 4
 BA-A110 x 2, BA-A136 x 8
 AR-C006 x 4, AR-C021 x 2
 AR-E001 x 2, AR-I019
 BO-A014, FO-A002 x 2
 Function: Editing Functions (Welding)

- 4 Use Background Scan to scan and cut the photo.

Built-in Pattern: BA-A001
 Function: Background Scan

- 5 Lay out all the cut pieces, then glue them together.

- 6 Glue the front house-shaped piece to the back piece to complete the card. Turn it into a useful and stylish desktop item by adding photos or a stick-on note pad.



Capture your love with a photo album of your very own design

A photo album filled with precious memories and moments needs just the right cover. Give form to your feelings by fashioning the perfect cover that will convey your love. Enjoy the moments you spend making this album cover for memories to last a lifetime.



Material

Outer dimensions: 14.5" x 13"
 Paper – 12 kinds, fabric – 5 kinds
 Bear: 9.06" x 7.62"; circular face piece: diameter 2.55"
 Border ribbon: 1.33" x 11.26"
 Text block: 4.33" x 5.18"
 Fancy ribbon, photo, rings, glue
 Cut photo to appropriate size.

● Optional Accessory:
 Iron-On Fabric Appliqué Contact Sheet



Tip Easily save precious photos to your USB flash drive. Simply scan in your photo, save the original, and print a copy to use in your projects. Cut directly from your photo or use the copy to commemorate your special moment.

Function: Scan to USB

1 Affix 12" album pattern paper to the cover of the photo album.

2 Attach the Iron-On Fabric Appliqué Contact Sheet to the piece of felt to use for cutting the built-in pattern of a bear, and a sheet of the same type to the fabric to use for the cake (piece B of step 4).

3 When cutting the bear, overlay a built-in pattern of a circle on the face and cut out the circle. Then cut the outline of the bear.

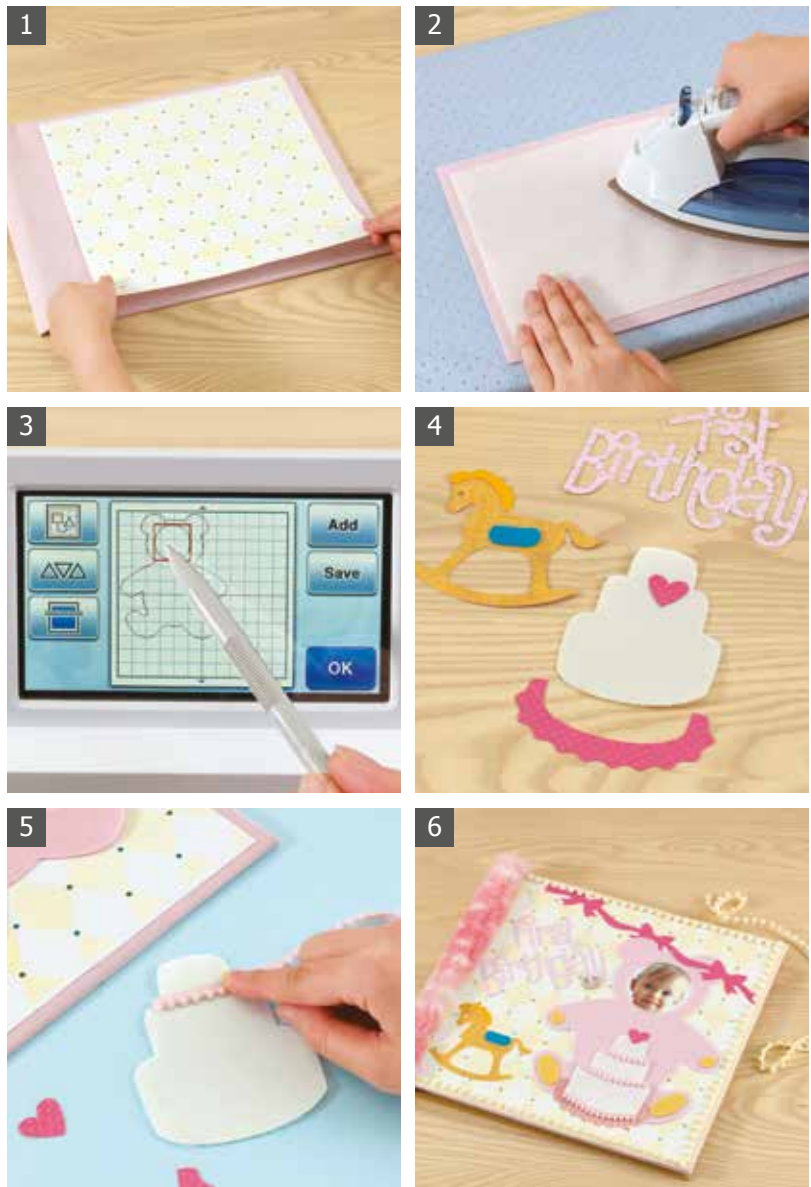
Built-in Patterns: BA-A045
 AR-I042 (pieces A, C, C', D, D')

4 Cut the cake and all other built-in patterns.

Built-in Patterns: AR-I030 (pieces A, B, E)
 AR-I039
 BO-A024
 LO-A020

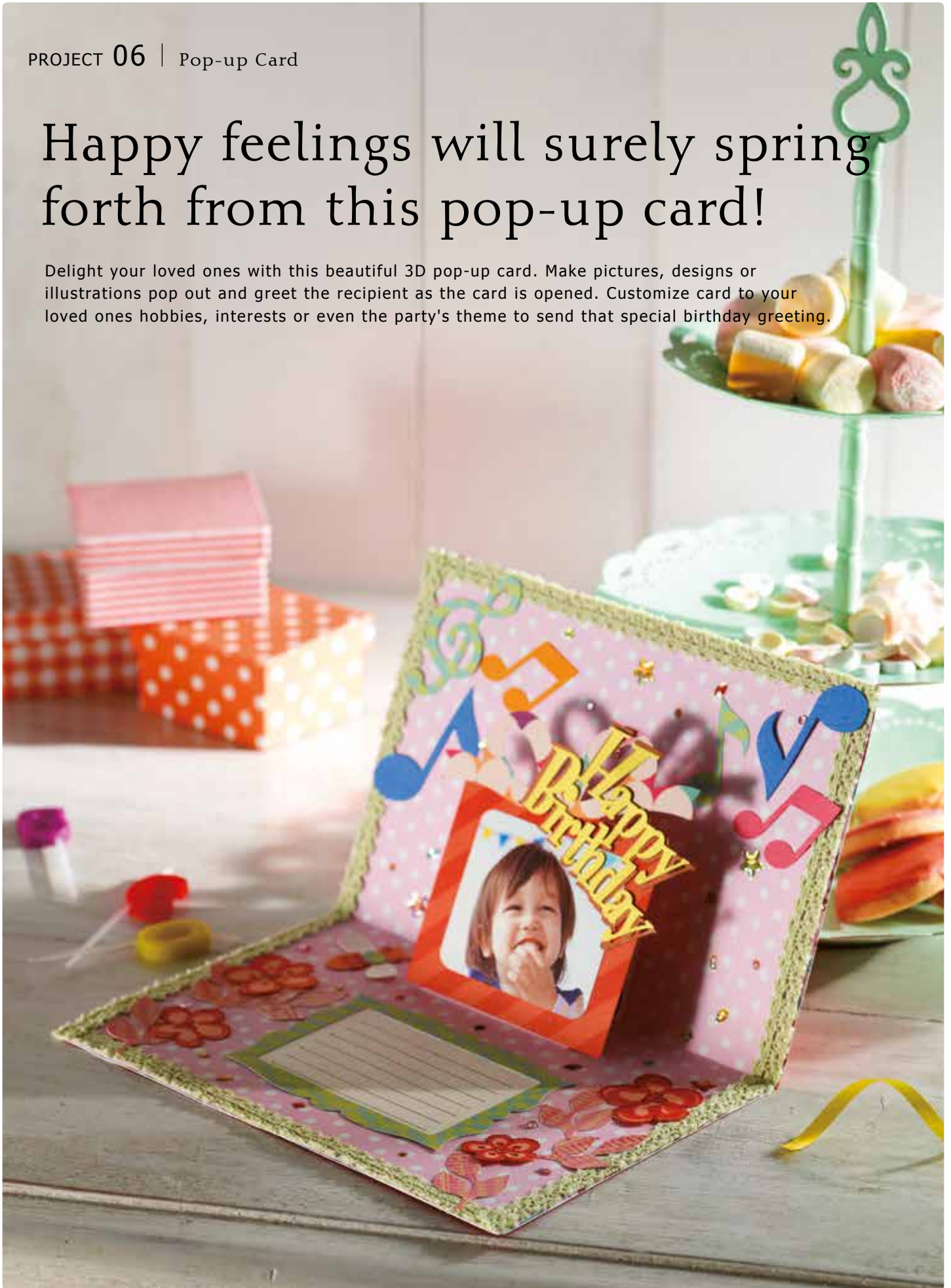
5 Decorate and attach all the cut pieces. Cut the photo so that it fits the cut-out face of the bear.

6 Attach fancy ribbons and cloth strips to the edges.



Happy feelings will surely spring forth from this pop-up card!

Delight your loved ones with this beautiful 3D pop-up card. Make pictures, designs or illustrations pop out and greet the recipient as the card is opened. Customize card to your loved ones hobbies, interests or even the party's theme to send that special birthday greeting.



Material

Outer dimensions (opened card): 7.95" x 10.63"

Paper – 12 kinds

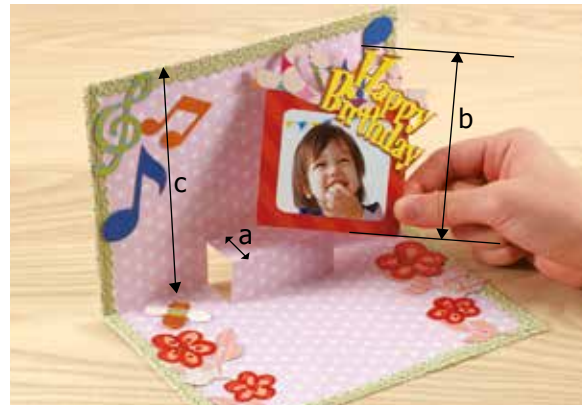
Gift-box piece: 4.12" x 4.33"

Photo frame piece: 2.24" x 2.68"

Message area: 3.94" x 2.86"

Photo, ribbon, stickers, rhinestones, glue

Use the ornaments on page 34.



Tip Adjust the size of the gift-box piece so that no part of it sticks out when the card is folded closed. Adjust so that the total of the vertical length of the cut (a) plus the vertical length of the gift-box piece (b) is less than the vertical length of the card (c). $(a) + (b) < (c)$

- 1 Make the pop-up base (inner and outer pieces). Cut the two slits in the inner piece. (See the Tip above for details.)

Built-in Pattern: BA-A012 x 2

- 2 Use Direct Cut to cut the hand-drawn flower ornaments on page 34.

Function: Direct Cut

- 3 Cut the built-in pattern pieces. For the photo, use Scan to USB to scan the image, then use Background Scan to cut the data.

Built-in Patterns: BA-A002, AR-A027 x 6
AR-C023, AR-H022 x 3
AR-H023 x 2, AR-H025
AR-I011 (pieces A, C)
AR-K027, LO-A031 x 2

Functions: Scan to USB
Background Scan

- 4 Attach the built-in pattern pieces and decorate using lace and stickers. Attach the outer gift-box piece to the pop-up and glue it to the outer base piece.

- 5 Make the message area. Cut paper using the built-in pattern of a square, draw the lines, then glue the frame piece over the square.

Built-in Pattern: BA-A012

- 6 Attach the outer backing piece to complete the card.



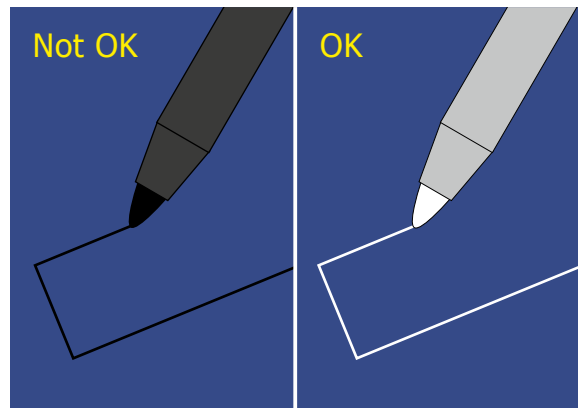
Decorated boxes that convey the joy of giving

Your creativity is the only limit when it comes to decorating these charming containers. They make great gift boxes – just select the recipient's favorite colors and design elements, and embellish with your own creative touches.



Material

Outer dimensions: diameter 4.25" x 1.31"
 Paper – 10 kinds
 Text ("FOR YOU"): 1.96" x 2.76"
 Large flower: 1.65" x 1.57"
 Can, rhinestones, ribbon, lace flowers, glue
 Decorate as desired (with paper and fabric).



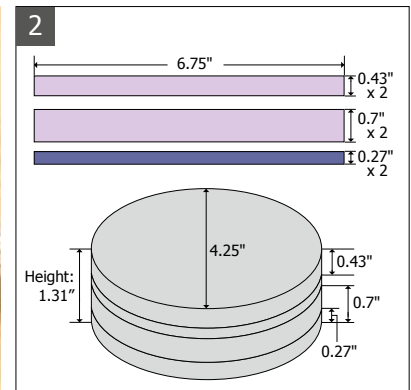
Tip When cutting dark-colored material using Direct Cut, using a white or other light-colored pen to draw the cutting lines on the back of the material helps ensure better recognition.

Function: Direct Cut

1 Create the side pieces that go around the can. First, use a tape measure to measure the can's circumference, and if the length is greater than 12 inches, cut as multiple pieces.



2 The circumference of the can used in this recipe is 13.5 inches, which is greater than 12 inches, so cut the side piece in two parts, each measuring half the length (6.75 inches).



3 Hand-draw band lines for the side pieces on the back of the material and cut using Direct Cut.
 Function: Direct Cut



4 Glue the cut bands to the side of the can.



5 Cut the built-in pattern pieces, and glue first ribbon and then the cut pieces to the can in layers.

Built-in Patterns: BA-A045
 BA-A048
 BA-A051
 AR-A011
 AR-A014
 AR-I001
 AR-K028
 LO-A021



6 Decorate by attaching lace, rhinestones, and other items. Positioning lace and ribbon over edges and seams can help produce a more-attractive appearance.



Hand-decorated tumblers – perfect for break time

Add a fun accent by hand-decorating the paper lining inside the plastic tumbler you use for your favorite beverage. Combine illustrations, text, and other design elements to express your individuality! Savor the fun of bringing your own original design to life with every sip from the tumbler.



Material

Outer dimensions: 5.90" x 7.08"

Paper – 7 kinds

Flowers – large: 2.04, small: 1.41"

Stalk: 3.97" x 5.31"

Flower petals – large: 0.98" x 0.62", small: 0.58" x 0.50"

Use the ornament on page 33.

Tumbler, glue

● Optional Accessory:
Scanning Mat 12" x 12"



Tip Trace the tumbler insert liner and scan it into the machine using Scan to Cut Data to create multiple cut pieces of the same shape. Decorate with your personal artwork or even some of the built-in patterns.

Built-in Pattern: LO-A035
Function: Scan to Cut Data

- 1 Remove the original paper liner from a commercially available tumbler. Place dark paper between the removed original white liner and the white Scanning Mat, and scan the liner using Scan to Cut Data.
Function: Scan to Cut Data



- 2 Using the scanned data from step 1, cut a new liner using your choice of paper.



- 3 Use Scan to Cut Data to scan a flower ornament (a) on page 33, then use Unify to group the parts. Use Background Scan to scan the new liner piece you cut in step 1, then transfer the parts grouped using Unify and cut them.
Functions: Scan to Cut Data
Background Scan
Editing Functions (Unifying)



- 4 Use Scan to Cut Data to scan the other flower ornaments (b), (c), and (d) on page 33, then cut using different colors of paper for each. Glue the cut pieces onto the liner.
Function: Scan to Cut Data



- 5 Apply colored paper to the back of the liner so that it covers the holes cut in step 3.



- 6 Insert the finished liner into the tumbler.



A hand-crafted photo stand adds a personal accent to a special memory

A special photo deserves a frame that helps recapture the joy of the moment. Using fabric and paper in your favorite patterns and colors, along with your own design ideas, you can create a frame that accents the happy feelings at the instant the shutter was pressed. What better way to convey joy than with a hand-made photo frame?



Material

Outer dimensions (when finished): 5.00" x 7.09"
 Paper – 5 kinds, fabric – 1 kind
 Frame: 2.86" x 3.94"
 Beads, buttons, antique lace, glue
 For the photo holder, use the ornament on page 33.

- Optional Accessories:
 High Tack Adhesive Fabric Support Sheet
 Erasable Pen Set
 Pen Holder



Tip Use an embossing stylus or blunt-tipped object to press the petals to a molded shape to add more depth and texture to your projects. Support with a soft surface for maximum results.

1 Affix the High Tack Adhesive Fabric Support Sheet to the Standard Mat and attach the fabric.

2 Call up the built-in pattern and make the Seam Allowance setting. Draw the outline and cut with the seam allowance. Peel off the fabric and High Tack Adhesive Fabric Support Sheet and place thick paper on the mat. Clear the Seam Allowance setting and cut the paper.

Built-in Pattern: BA-A014
 Function: Editing Functions (Drawing Functions)

3 Iron the fabric folded over the base paper. Apply glue at the folds and attach the fabric so that it extends slightly beyond the edges of the base paper.

4 Using Scan to Cut Data, group together and cut 4 built-in patterns of flowers and 2 for the photo holder using the ornament on page 33. Then cut the other built-in pattern shapes.

Built-in Patterns: BA-A014
 AR-A010 x 4
 AR-A021 x 2
 AR-K027
 FO-A003
 Function: Scan to Cut Data

5 Attach all the cut pieces and the photo to the fabric-covered base paper of step 3.

6 Bend the photo holder, then place the finished photo stand on the holder.



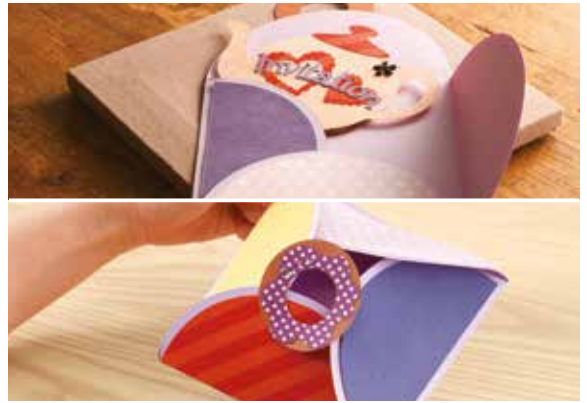
A card and letter set for people who like surprises

What jumps out from this envelope isn't just an invitation to a tea party, but also a group of fun and tasty-looking cards. Enhance the cards with your own original designs to create a fun surprise for the recipient.



Material

Outer dimensions (unfolded envelope): 11.03" x 11.03"
 Outer dimensions (folded envelope): 5.51" x 5.51"
 Paper – 12 kinds
 Semicircles (for step 2): 2.36" x 5.13"
 Teapot: 4.14" x 5.91"
 Donut back piece (purple): diameter 3.25"
 Ring-shaped clasp base (brown):
 outer diameter 2.36", inner diameter 1.18"
 Computer-printed text
 Rhinestones, brad, glue
 Decorate as desired.
 For the donut and the ring-shaped clasp (heart-dotted),
 use the ornaments on page 34.



Tip When fastening the letter cards together with the brad, position the attachment points as shown in the photo and use an awl or the like to punch the holes. Attach the clasp piece to it using a dab of adhesive at one spot, to serve as a fastener.

- 1 Make the envelope by welding together the built-in patterns of the semicircle and square.

Built-in Patterns: BA-A001
 BA-A055 x 4
 Function: Editing Functions (Welding)

- 2 Cut the other built-in pattern shapes. Create the "Tea Party" and "Cookies" text using the built-in fonts, then weld the letters together.

Built-in Patterns: BA-A045 x 3, BA-A050 x 4
 BA-A055 x 4, BA-A068 x 2
 AR-E018
 FO-A001, FO-A002
 Function: Editing Functions (Welding)

- 3 Use Direct Cut to scan and cut a photo of the donut ornament on page 34. First resize the scanning area to just the center hole and cut it, then resize to include the entire donut and cut the outer circumference. In the same way, use Direct Cut to cut the clasp ornament on page 34.

Function: Direct Cut

- 4 Print the "Invitation" text and scan it using Scan to Cut Data, then cut it using the paper you want.

Function: Scan to Cut Data

- 5 Glue together the cut built-in pattern pieces to make the letter cards, then decorate them with rhinestones. Also glue the cut pieces to the envelope.

- 6 Fasten the letter cards together using a brass brad (split pin). Finish by folding the envelope closed with the letter cards inside. Brass brads are available in a variety of types, giving you a fun selection to choose from.



An elegant calendar showcasing your creative ideas

This charming perpetual calendar features a three-dimensional butterfly. The combination of date numbers makes for a different fun design on each passing day. Add your own ideas for an elegant design that adds zest to any interior.



Material

Outer dimensions (board size): 13.18" x 13.18"

Paper – 6 kinds

Basic shape for month names: 1.77" x 2.17"

All text: 5.11" high; numbers: 5.11" x 6.91" ("27")

1 sheet printed with month names

2 pieces of paper created with dates

Studs, magnetic sheet, magnets, card holder, glue, string

For the butterfly, use the ornament on page 33.



Tip To make the finished results even more attractive, attach backing paper to the back of the pattern paper at the area where the butterfly design has been cut. Using paper of the same pattern as the backing paper makes the cut-out areas even more eye-catching. An attractive calendar adds an accent to any interior, day in and day out.

- Using Scan to Cut Data, scan the butterfly ornament on page 34. Use Unify to group the data together, position the design at the top center of a 12" piece of patterned paper, then cut the design.

Functions: Scan to Cut Data
Editing Functions (Unifying)

- Cut built-in patterns for the flowers and grass, and attach them in an attractive arrangement to the 12" patterned paper from step 1.

Built-in Patterns: AR-A020 x 4
AR-A025 x 4
BO-A020

- Using Background Scan, scan paper printouts of the month names. Lay out each aligned with the ziggurat-shaped built-in pattern, then cut the shape.

Built-in Pattern: BA-A137 x 6
Function: Background Scan

- Create the dates. Working one at a time, select the numeral using the built-in fonts, weld multiple digits together, if necessary, cut the produced shape, then attach a magnet to the back, at the top. Using sturdy, thick paper for the date numerals is recommended.

Built-in Pattern: FO-A001
Function: Editing Functions (Welding)

- Affix a magnetic sheet to the prepared base paper, then attach the pattern paper from step 2 to the base paper.

- Fasten the card holder to the base using studs, then place the current month card from step 3 in the holder. Attach the number for the current date to the magnetic sheet.



A keepsake box filled with treasured memories

This keepsake box is ideal for storing precious mementos. Enjoy choosing photos of smiling faces, shells from a favorite beach, and other such items that recall happy memories as you decide what paper and fabric to use for their setting. The moments you spend crafting this box are sure to become another fond memory.



Material

Outer dimensions: 13" x 13"

Paper – 5 kinds, fabric – 1 kind

Text (before slanting & rearrangement as 2 lines):

1.81" x 5.76"

2 cutout shapes – BA-A108: 3.93" x 3.93"

AR-K013: 2.57" x 3.61"

Dolphin: 7.31" x 7.46"

Photo, stamped paper, ribbon, shells

and other small objects, glue, glitter pen

For the stamps, use the ornaments on page 34.



Tip Add glittered accents with glittered pen or glue pens and glitter. Add depth to your project with foam tape to make your projects pop. The glitter and the depth will add interest and magic to any project.

- 1 Use the built-in fonts to enter the "SUMMER" and "MEMORIES" text. Arrange the text as shown in the photo, then use Unify to group it together.

Built-in Pattern: FO-A004

Function: Editing Functions (Unifying)

- 2 Make the photo frame. Call up the built-in patterns for (a) and (b); when calling up the built-in pattern for (c), enlarge it to maximum size and place it. Adjust the size for (a) and (b), then rotate the shapes and lay them out.

Built-in Patterns: BA-A108 (a)

AR-K013 (b)

AR-K016 (c)

- 3 Using the built-in patterns, cut 2 dolphin pieces of the same size and 3 same-size wave pieces.

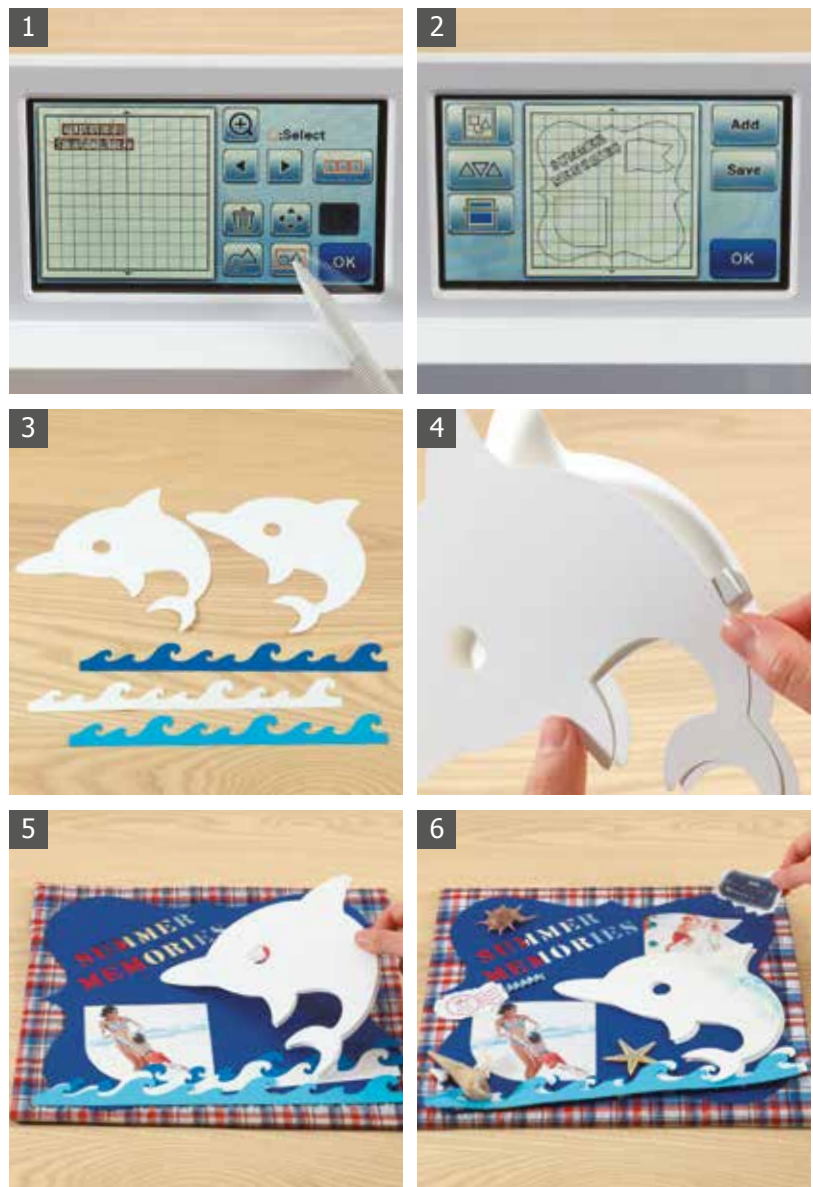
Built-in Patterns: AR-C014 x 2

BO-A019 x 3

- 4 Attach the cut-out pieces from step 3. Achieve a three-dimensional effect by stacking the pieces with each upper piece shifted slightly from the one below it and by using pop-up tape or the like.

- 5 Attach the pieces from step 2 to a prepared piece of fabric to use as the base. Place tricolor paper arranged diagonally under the text, and attach the photo to the back of the frame piece.

- 6 Decorate by attaching the stamp ornaments on page 34, shells, and other items. Finish by placing the decorated base inside the box.



Personalize any room with this elegant and decorative lampshade

With a little creativity, even an everyday object can become something special. Flower patterns, beads, ribbons, and other favorite items can transform a plain lampshade into a thing of beauty. Your handiwork can turn a room into a space that's all your own.



Material

Outer dimensions: 13" x 13"

Fabric – 5 kinds

Flowers – AR-A010 L: 5.60" x 5.83", M: 3.73" x 3.94",
S: 1.18" x 1.20"

AR-A020 L: 4.72" x 4.67", M: 2.76" x 2.72",
S: 1.22" x 1.19"

Beads, rhinestones, cloth-covered button

Table lamp, needle, thread, glue, thick adhesive core

● Optional Accessory:

Iron-On Fabric Appliqué Contact Sheet



Tip Use the Iron-On Appliqué Contact Sheet for double duty! Use it to stabilize your material for a perfect precise cut and then apply your design seamlessly to your lampshade along with an adhesive core for strength with the simple press of an iron.

1 Attach the Iron-On Fabric Appliqué Contact Sheet to the back of the fabric to cut.

2 Cut the built-in pattern shapes for the flowers as shown in the photo.

Built-in Patterns: AR-A010 – L x 2, M x 2, S x 4
AR-A020 (piece A) – L x 2, M x 4, S x 4

3 Stack the cut flower pieces from step 2 and string them together using thread and a cloth-covered button.

4 Cut the other built-in pattern shapes.

Built-in Patterns: AR-J014
AR-J015

5 Use fabric glue to attach all pieces to the shade, giving attention to achieving an attractive overall balance.

6 Sew on beads and other decorative elements.



An appliquéd tote bag – charming and one of a kind

A pretty tote bag can make shopping more fun, and the addition of a few appliquéd shapes cut from fabric and some decorative stitching can make your bag one of a kind. Just a few simple modifications can completely transform the look – have fun trying out all the different ideas you come up with!



Finished size 16.93" high (from handles to bottom) x 14.96" wide

Material (See dimensions on page 34.)

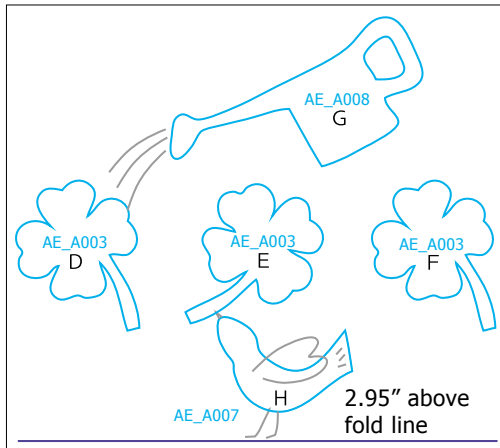
- A: Bag outer fabric (unbleached cloth/No. 1 canvas): 27.56" x 15.75"
- B: Bag bottom fabric (beige): 6.69" x 15.75"
- C: Bag inner fabric : 27.56" x 15.75"
- D: Appliqué fabric (green check pattern): 7.87" x 7.87"
- E: Appliqué fabric (pink): 7.87" x 7.87"
- F: Appliqué fabric (green polka-dots): 7.87" x 7.87"
- G: Appliqué fabric (light blue): 7.87" x 7.87"
- H: Appliqué fabric (yellow): 7.87" x 7.87"
- Handles (2-linen tape): 1.69" wide x 16.54"
- Sewing thread for appliqué stitching

- Optional Accessories:
 - Iron-On Fabric Appliqué Contact Sheet
 - Appliqué Pattern Collection (USB)

Appliqué Pattern Collection
Designed by Akiko Endo



PROJECT 14 | Appliqué Tote Bag



Iron-On Fabric Appliqué Contact Sheet

This is used when cutting pieces of appliqué fabric or felt. You use an iron to transfer it to the base fabric.



1 Use an iron to transfer the sheet to the back of the fabric.



2 Peel off the backing paper and attach the fabric to the Standard Mat.

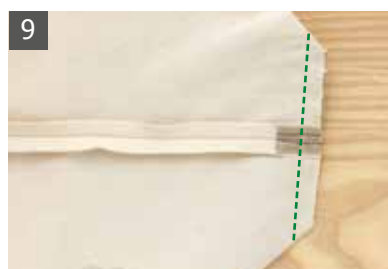
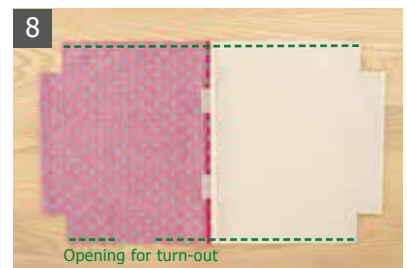


3 After cutting, peel off the cut shape from the mat.

Preparations

Cut the bag outer fabric (A), bag bottom fabric (B), bag inner fabric (C), and linen tape. (See the dimension drawing on page 34.) Attach the Iron-On Fabric Appliqué Contact Sheet to the back of each piece of appliqué fabric (D through H).

- 1 Insert the USB flash drive into the machine and select the pattern (AE_A003). Attach fabric piece D to the Standard Mat and scan it. Lay out the pattern shapes in an attractive way to match the pattern of the scanned fabric.
Function: Background Scan
- 2 Cut the pattern pieces. In the same way, cut fabric pieces E and F. Select pattern AE_A008 for fabric piece G and pattern AE_A007 for fabric piece H, and cut.
- 3 On the outer fabric (A), draw a line 2.95 inches above the bottom center. Referring to the layout drawing, place the appliqué pieces (D through H) on the outer fabric, and iron on to attach.
- 4 Sew around the edges of the attached pieces of appliqué fabric. Referring to the included "Examples of stitch arrangements," sew stitches to make the watering can's sprinkled water and pattern and the bird's legs, wings, and beak. If you're using a sewing machine to make the stitches, work slowly when sewing intricate curves.
- 5 Fold over the seam allowance (0.39 inches) of the long edge of the bottom fabric (B). Line up the center of the bottom fabric (B) with the bottom center of the outer fabric (A) and sew together, using an edge-stitched seam.
- 6 Position the pieces of linen tape at the handle attachment points on the outer fabric, pin each piece of tape in place with its end 0.2 inches in from the edge of the outer fabric, then stitch loosely to hold in place temporarily.
- 7 Line up the outer and inner fabric inside-out, then sew together to form the back mouth (the edge where the handles are attached).
- 8 Open the inside seam, and line up and refold the mouth of the bag. Sew the two sides together. On the inner-fabric side, leave an open space of about 4 inches for turning out later.
- 9 Open the inside seam, line up the cut-ins at the bottom area, and sew the gussets. Sew the gussets for the inner fabric in the same way. Turn right-side out, using the open space left in step 8. Shape using the iron, then sew closed the turn-out opening left in step 8.
- 10 Place the inner fabric inside the bag and sew together the bag mouth, using an edge-stitched seam. Also stitch the bag at 0.39 inches below the edge of the mouth. Start sewing at an inconspicuous location on the side, and end with stay stitching or a backstitch. Fold the handle's center (the area gripped) in half across its width, and attach the ends of the tape using a straight (or zigzag) stitch.



PROJECT 15 | Framed Patchwork Square



Bring smiles with this cheerful framed patchwork quilt

This framed patchwork square makes a great gift. Have fun choosing combinations of shapes and layouts to create a piece that adds a lasting accent to any room, for a heartfelt gift that the recipient will treasure.

Finished size (patchwork) 7.87" x 7.87"

Material

- A: Patchwork fabric (light blue): 11.81" x 11.81"
 - B: Patchwork fabric (light orange): 11.81" x 11.81"
 - C: Patchwork fabric (pink): 11.81" x 11.81"
 - D: Patchwork fabric (ivory): 11.81" x 11.81"
 - E: Appliqué fabric (green): 7.87" x 7.87"
 - F: Appliqué fabric (light green): 7.87" x 7.87"
- Sewing thread for appliqué stitching
Appliqué piece template: Plastic sheet

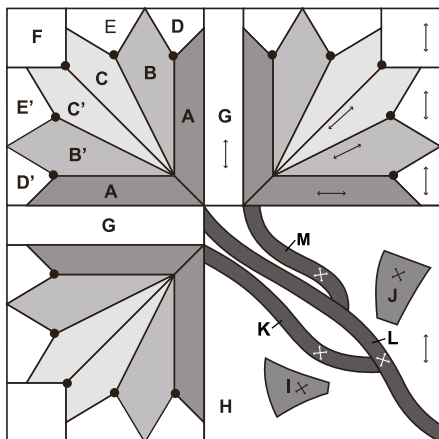
●Optional Accessories:

- High Tack Adhesive Fabric Support Sheet
- Erasable Pen Set
- Pen Holder
- Quilt Pattern Collection (USB)



Quilt Pattern Collection
Designed by Suzuko Koseki

PROJECT 15 | Framed Patchwork Square



(SK_A035)

Preparations

Attach the plastic sheet to the Standard Mat.

- 1 Insert the USB flash drive into the machine and select the pattern (SK_A035). Select the appliqué pieces (I through M).
- 2 Use Auto Layout to arrange the pieces.
Function: Editing Functions (Auto Layout Functions)
- 3 Cut the template paper for the appliqué.
- 4 Put the Erasable Pen in the Pen Holder and mount the Pen Holder on the machine.
- 5 Attach the High Tack Adhesive Fabric Support Sheet to the Standard Mat. Orient fabric piece A so that its back is facing up, and attach the fabric to the mat so that its warp threads lie vertically.
- 6 Draw the outline for piece A.
Function: Editing Functions (Drawing Functions)
- 7 Replace the Pen Holder with the Standard Cut Blade Holder, then carry out cutting for the piece. The piece is cut with seam allowances.
- 8 Use the same procedure to draw and cut all the pieces.
- 9 Refer to the Basics Quilting Guide, and follow the instructions for piecing and appliqué to make the block.
- 10 Place the block in the frame.

High Tack Adhesive Fabric Support Sheet

This is used when cutting pieces of patchwork or appliqué fabric with seam allowances.



1 Attach the sheet to the Standard Mat and peel off the backing paper.



2 With the back of the fabric facing up, attach the fabric to the mat.



3 Cut the fabric, then peel off the cut shape from the mat.



1



2



3



4



5



6



7



8



9

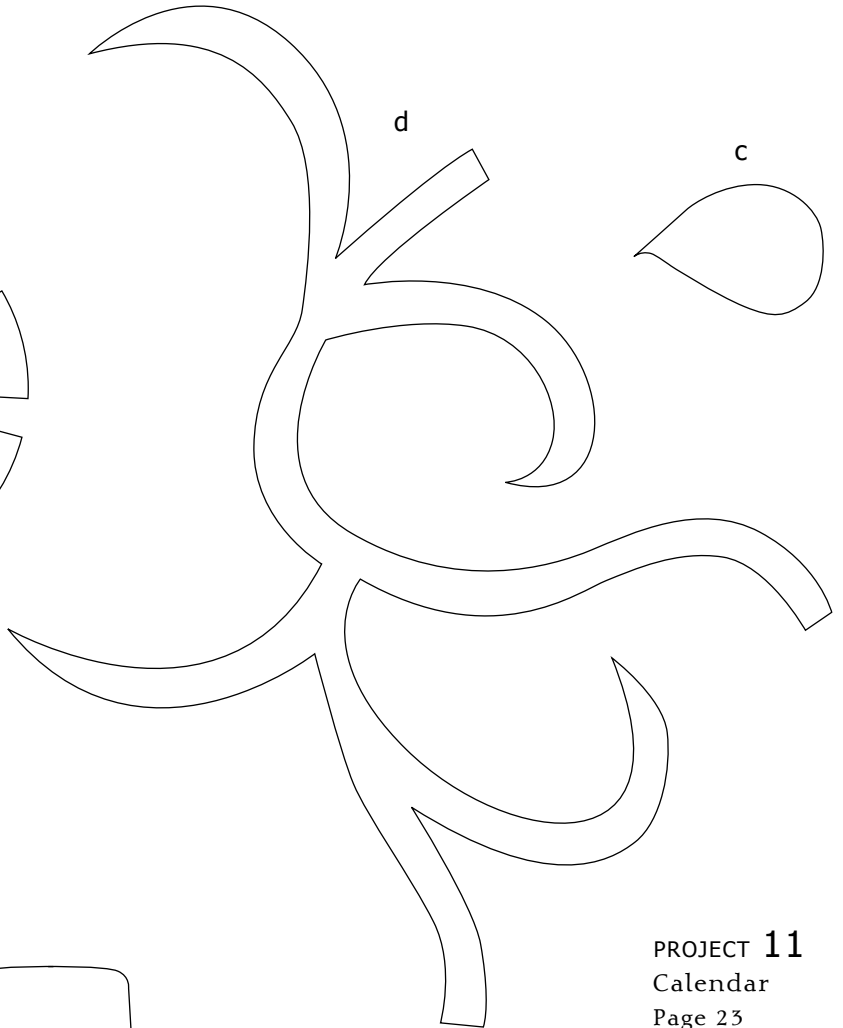
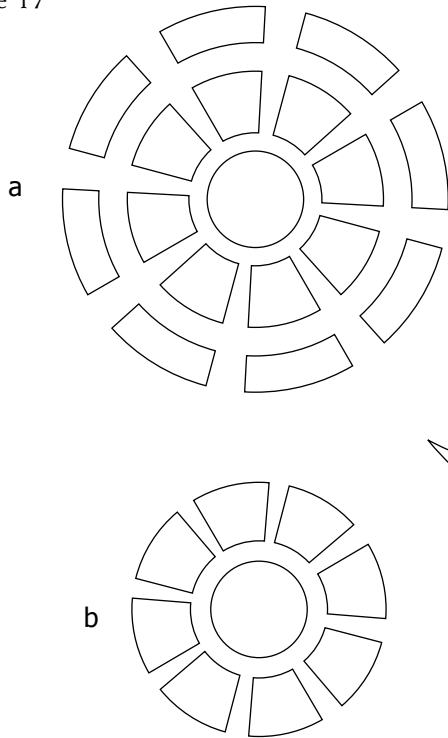


10

Custom Designs for All Your Creative Needs

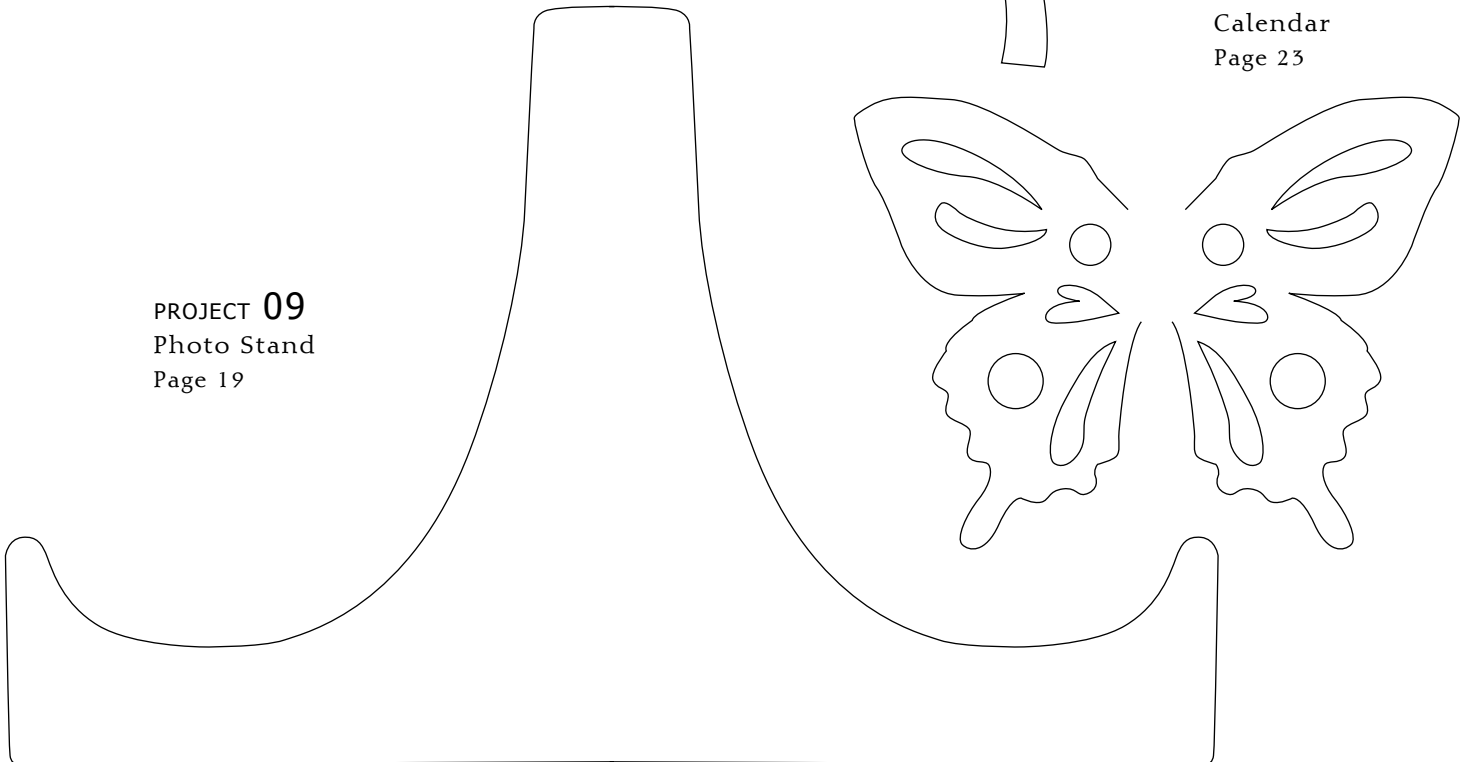
Actual size except where noted.
When printing out actual-scale figures, print at 100% or set
your printer so that it will not enlarge or reduce the scale.

PROJECT 08
Beverage Tumbler
Page 17



PROJECT 11
Calendar
Page 23

PROJECT 09
Photo Stand
Page 19



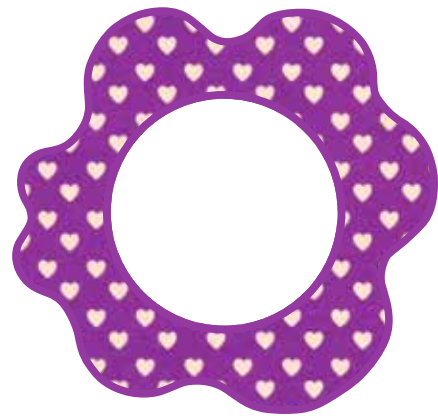
ORNAMENTS

(Actual size except where noted.)

PROJECT 06
Pop-up Card
Page 13

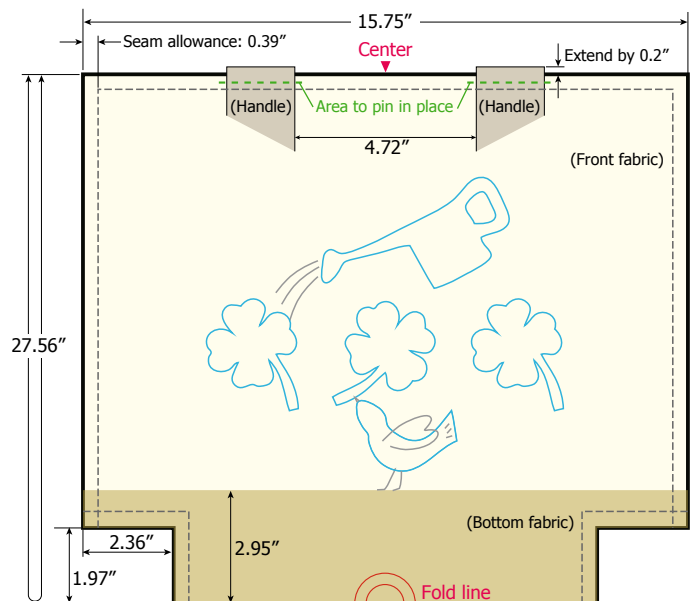


PROJECT 10
Pop-up Card and Letter Set
Page 21



PROJECT 14
Appliqué Tote Bag
Page 29

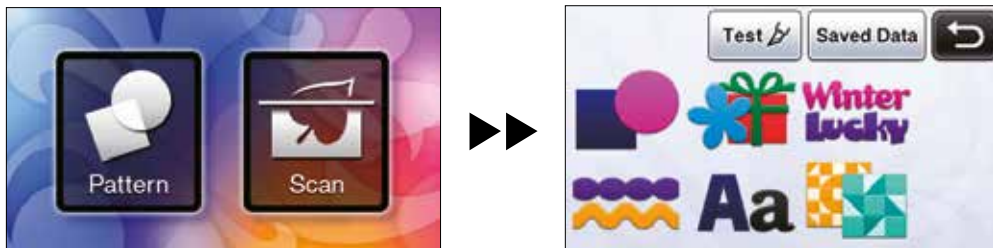
PROJECT 12
Keepsake Box
Page 25



Note: 1/5 scale

Built-in Patterns

Select one of the built-in designs, edit to your liking, and then cut out on the material of your choice.



Choose from a Variety of Patterns



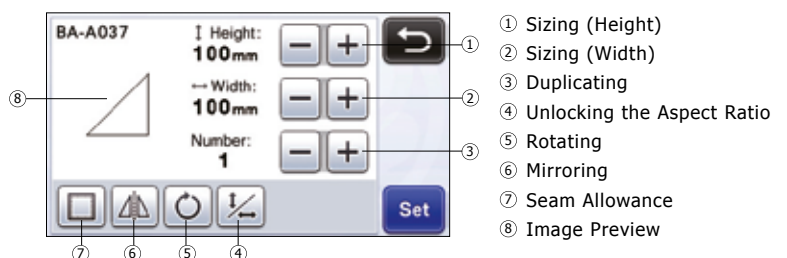
Character Input Functions

After entering the characters, touch the "OK" key.



Pattern Editing Functions

The pattern editing functions available may differ depending on the pattern you select.



● Direct Cut

Scanning for Cutting

A printed image or an original hand-drawn illustration can be scanned and its outline can be cut out or drawn. This is useful for scanning images for paper crafts, then cutting them out.



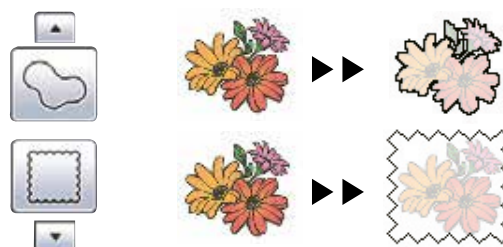
Outline Distance

Specify the distance from the cutting line to the outline of the scanned image.



Outline and Framing

Any shape can be specified as the cutting line for the scanned image.



● Scan to Cut Data

Creating Cutting Data

A printed pattern or image or an original hand-drawn illustration can be scanned, converted to cutting lines for cutting/drawing with this machine, then saved as data.



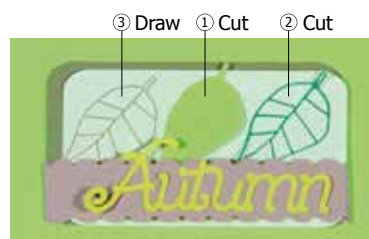
① Select the cutting line type at the image editing screen.



Use the touch pen to edit the image area for the cutting lines to be saved as data, and then touch the "Save" key.

Difference in cutting lines depending on detection standard

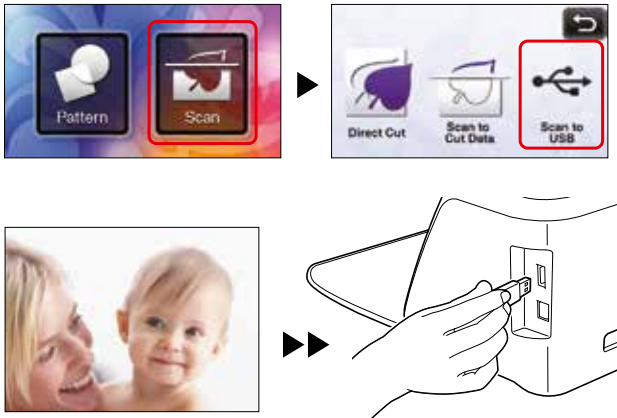
	① Outline detection	② Region detection	③ Line detection
Original			
Cutting lines			
Finished project after cutting			



● Scan to USB

Scanning Images

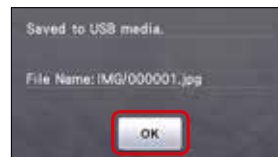
A pattern printed on paper or fabric, an image, a pattern template, or an original hand-drawn illustration can be scanned and saved as image data on a USB flash drive. This is useful for saving the data of an original image as backup before cutting.



Touch to display the scanning settings screen.



Touch (Scan Size) to display the scanning size settings screen.
Touch (Scan Resolution) to display the scanning resolution settings screen.

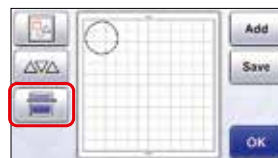
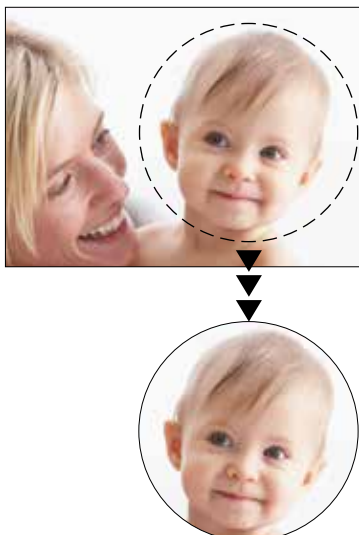


Press the "Start/Stop" button to start scanning.
Touch the "OK" key to exit "Scan to USB" mode.

● Background Scan

Scanning a Background Image

The background scanning function is also useful when cutting out patterns from material with a design on it. By arranging the patterns on the screen in the desired patterned area of the material, cutouts with a specific design can be created.



Touch at the pattern layout screen to start the background scanning function.
Press the "Start/Stop" button to start scanning.



Use the layout editing functions to move the pattern. Scan the material first, and then preview design placement at the preview screen.

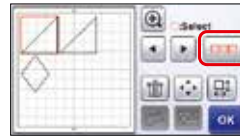
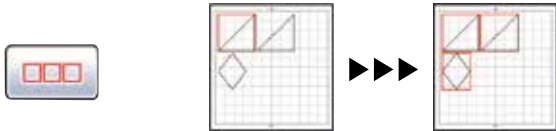



Check the pattern on the screen. If they are as desired, then cut.

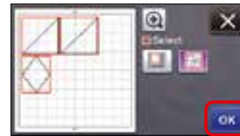
● Editing Functions

Selecting Multiple Patterns

This method of selecting patterns within a specified area is useful for welding or unifying patterns and deleting unwanted images when scanning.



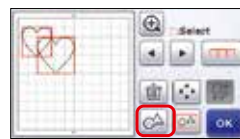
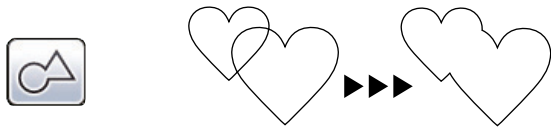
Touch  at the layout editing screen for making multiple pattern selection.




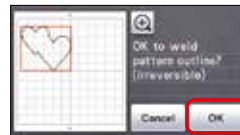
Check the selection, and then touch the "OK" key.

Welding

When multiple patterns are selected in the layout editing screen, the outlines of those patterns can be welded to create a single outline.



After selecting multiple patterns, touch .



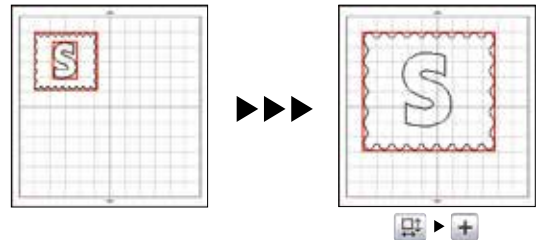
Check the preview, and then touch the "OK" key.

Unifying

When multiple patterns are selected in the layout editing screen, those patterns can be unified together and edited as a single pattern. This is useful for increasing or reducing the size of multiple patterns at one time.

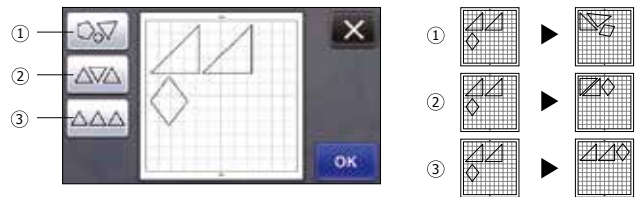
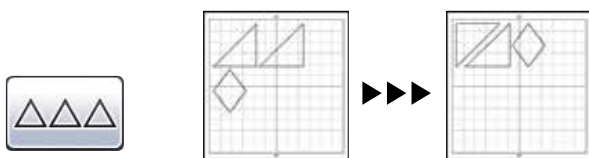


Increasing the size of multiple patterns at one time



Auto Layout Functions

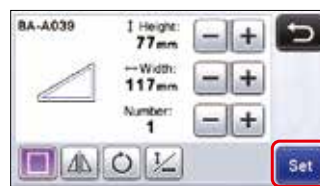
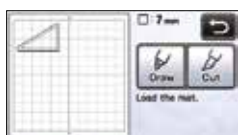
The auto layout functions are useful when you do not wish to waste the material that has been placed on the mat.




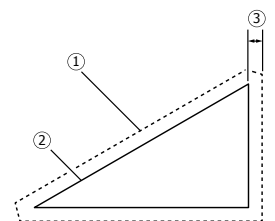
- ① Rearranging by Rotating Patterns to Any Angle
- ② Rearranging by Rotating Patterns 0° or 180°
- ③ Rearranging Without Rotating

Drawing Functions

With a pen and the Pen Holder, you can draw patterns on material. Using the seam allowance settings also allows you to draw patterns with seam allowances on material and then cut them out. These drawing functions can be used to create quilt pieces.



Touch  to apply the seam allowance.



- ① Seam allowance line
- ② Pattern outline (stitching line)
- ③ Seam allowance

● Optional Accessories

Quilt Pattern Collection



Designed by Suzuko Koseki

Use the additional USB flash drive to access 55 custom quilt designs to further your creative needs. Using a USB flash drive makes storing your favorite ScanNCut files simple and easy to use at a moment's notice.

Appliqué Pattern Collection



Designed by Akiko Endo

Use the additional USB flash drive to access 50 custom appliqué designs that can be used for paper-crafting or sewing projects.

Additional Accessories



- ① Standard Mat 12"×12" ② Low Tack Adhesive Mat 12"×12" ③ Scanning Mat 12"×12" ④ Standard Mat 12"×24" ⑤ Low Tack Adhesive Mat 12"×24"
- ⑥ Quilt Pattern Collection ⑦ Appliqué Pattern Collection ⑧ Erasable Pen Set ⑨ Pen Holder ⑩ Deep Cut Blade Holder ⑪ Standard Cut Blade Holder
- ⑫ Color Pen Set ⑬ Deep Cut Blade ⑭ Standard Cut Blade ⑮ High Tack Adhesive Fabric Support Sheet ⑯ Iron-On Fabric Appliqué Contact Sheet

brother
at your side

©2013 Brother Industries, Ltd. All rights reserved.
All information correct at time of printing.