



See it.



Scan it.



Cut it.



Create it.

Scan & Cut CM900

Scan any image or sketch, then precisely cut the shapes or outlines – without design cartridges or a PC.

- 300 dpi built-in scanner
- 15 fonts and 1102 built-in designs including 140 quilt patterns
- Scan your design and save it as a cut or draw file
- Pen draw
- Two USB ports
- WLAN connection

Welcome to the world's first home and hobby cutting machine with a built-in scanner.

Bright, large colour LCD touch screen display
Size: 2.35" x 4.23" (59.76 x 107.57 mm)

300 dpi scanner
12" x 24" (305 x 610 mm)
scanning area

11.7" (297 mm)
width cutting area

WLAN connection

Two USB ports for
PC connection and media

Accommodates 12" x 12" (305 x 305 mm)
and 12" x 24" (305 x 610 mm) cutting mats

Welcome to a whole new world of innovation.

Scan any image or sketch, then precisely cut the shapes or outlines – without design cartridges or a PC.

Cuts paper, fabric and more.

Great range of accessories available including Rhinestone Kit, Printable Sticker Kit, Stencil Sheets and much more.



Bright, large color LCD touch screen display

The extra large non glare touch screen display (30% larger than before) makes it easier than ever to edit, zoom and customise designs.



Touch Pen & Spatula Stand

The CM900 has a handy storage compartment behind the screen to store the spatula and touch pen.



300 dpi built-in scanner

Scan virtually anything – a hand-made drawing, a magazine clipping, cherished photos and more – create endless cut designs and save to the machine's memory.



Scan-to-cut-data

Scan in your design and save it as a cut or draw file. ScanNCut will automatically create cut lines.



15 fonts and 1102 built-in designs, including 140 quilt patterns

Choose from basic shapes, intricate designs, borders, quilt patterns, fonts and more. Simply select a design, and then see it on your choice of material.



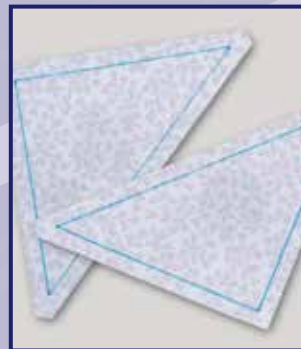
Fabric cut

Easily cut precise fabric shapes. By pairing the erasable draw function with cutting, you can draw your seam allowance and get precise sewing guidelines.



Direct cut

Scan your material, create the outline cuts and select your design straight from the surface to cut out. Remove the hassle of hand-cutting designs from your favourite papers and fabrics.



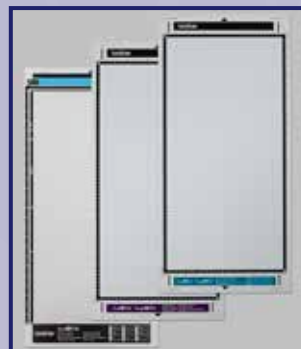
Pen Draw

With ScanNCut, you can change your cut file – whether it's from a previous scanned image or a built-in design – then recreate the design into a drawing in virtually seconds.



WLAN connection

Wireless connection allows you to send designs directly from your free CanvasWorkspace account. No need for cables or USB memory sticks.



Extra large 24" scanning area*

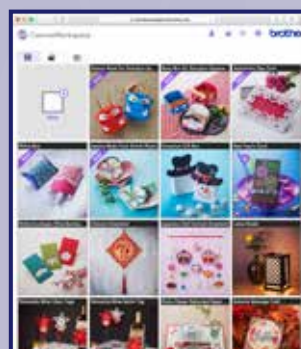
The new 12" x 24" (305 x 610 mm) scanning area is ideal for large wall art designs, 18" Doll patterns, large quilt designs and much more.

* large 24" mats are available as optional accessories



SVG Data readability

No more converting SVG files before cutting them out. The CM900 will read SVG cutting files directly, there is no need to convert them into FCM format first.

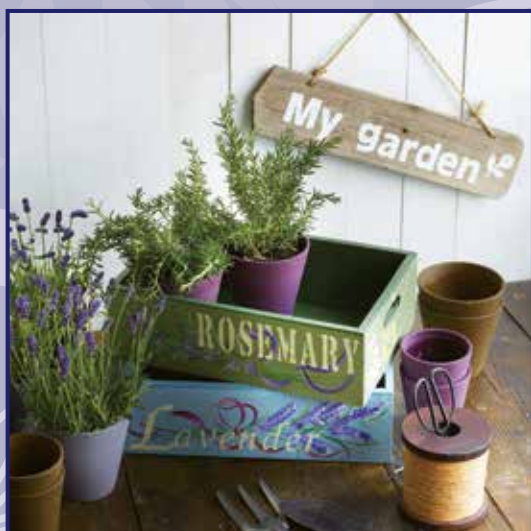


CanvasWorkspace

An application that allows you to create and store your own designs on your computer or tablet. Designs can be transferred to the ScanNCut via USB memory stick, by direct USB or WLAN connection.

Included accessories:

- Standard cut blade holder
- Standard cut blade
- Standard mat 12" x 12" (305 x 305 mm)
- Low tack adhesive mat 12" x 12" (305 x 305 mm)
- High tack adhesive fabric support sheets (2 sheets) 12" x 12" (305 x 305 mm)
- Iron-on fabric appliqué contact sheets (2 sheets) 12" x 16" (305 x 406 mm)
- Pen holder
- 6-colour pen set
- 2-type erasable pen set
- Spatula
- Accessory pouch
- Touch pen
- Touch pen and Spatula holder



Optional extras:

- Deep cut blade holder
- Deep cut blade
- Standard mat 12" x 24" (305 x 610 mm)
- Low tack adhesive mat 12" x 24" (305 x 610 mm)
- Scanning mat 12" x 12" (305 x 305 mm)
- Scanning mat 12" x 24" (305 x 610 mm)
- 4 inch (102 mm) Brayer/Roller
- 3.9 inch (100 mm) Scraper
- Precision inverted Tweezers
- Spatula and Hook set
- Printable sticker starter kit
- Printable sticker sheet set (7 printable stickers & 7 laminate sheets)
- Mini printable sticker sheet set (7 printable stickers & 7 laminate sheets)
- Universal pen holder for pens between 9.6 mm and 11.4 mm diameter
- Stencil sheet 12" x 24" (305 x 610 mm)
- Rhinestone starter kit
- Rhinestone sheet set (3 template sheets & 3 transfer sheets)
- Rhinestone 7 transfer sheets
- Stamp starter kit
- Stamp silicone sheets 150 x 200 mm (3 pcs)
- Stamp block set
- Embossing Starter Kit
- Embossing Mat
- Embossing Tool set
- Embossing Silver Metal Sheets (2 sheets) 7.9 x 6.1" (200 x 155 mm)
- Embossing Brass Metal Sheets (2 sheets) 7.9 x 6.1" (200 x 155 mm)
- Foil Transfer Starter Kit
- Foil Transfer Glue Pens (2 pcs)
- Foil Refill Pack (4 sheets of 200 x 100 mm) – 6 different colours available
- ScanNCutCanvas Premium Pack 1
- ScanNCutCanvas Premium Pack 2
- More patterns available on USB or by activation card



For more information, see your dealer or visit www.brotherscanncut.eu.

Follow **ScanNCutUK**  

Contact:



brother
at your side

Brother Sewing Machines Europe GmbH UK Branch
Shepley Street, Audenshaw, Manchester M34 5JD
www.brotherscanncut.eu